

# **PCBC Data Pack Cheadle Hospital**

## Summary

- **Asthma, Cancer, Coronary Heart Disease, Depression, Diabetes, Epilepsy, Obesity and Stroke are of high prevalence in the Staffordshire Moorlands locality than of England.**
- **Staffordshire Moorlands performs poorly compared to England in breastfeeding, excess winter deaths, recorded diabetes and smoking at time of delivery.**
- **Cheadle Hospital is attended by patients from more least deprived areas than most deprived.**
- **61% of appointments are attended by females, the majority of which are aged 50+.**
- **The over 70s will see the largest population increase over the next 5 years.**
- **Neurology, Memory Clinic, Rheumatology, Physiotherapy and District Nurses have the most appointments attended at Cheadle Hospital.**
- **55% of appointments are attended by patients living within 2 miles of Cheadle Hospital.**
- **70% of service users recorded they were married or in a civil relationship.**
- **68% stated their religion as either CofE, Roman Catholic or Christian.**
- **96% of service users stated British as their ethnicity.**

# Cheadle Hospital and Area Health Services



# Services at Cheadle Hospital

Audiology	Falls	Parkinson's Clinics
Cardiology / Heart Failure	GPSI Substance Misuse	Physiotherapy
Diabetic Clinics	INR Clinics	Pulmonary Rehabilitation
Dietetics	Memory Clinics	Rheumatology (Drug Monitoring)
District Nurses – Wound Care	Multiple Sclerosis Clinics	Speech & Language Therapy
Epilepsy	Neurology	Supportive Therapies

# Feedback from the pre-consultation

<b>Cheadle</b>
Minor Injuries Unit
Community Beds
X-ray/scans facility
Memory Clinic
GP
Phlebotomy
Audiology
Diabetes
Cancer Screening
Counselling
Maternity services
Paediatric services
Chiropody
Eye-clinic
Family Planning
Fracture Clinic
Physiotherapy

Most common services in order of prevalence

# Changing/improving the delivery/design of local health services

The suggestions made by participants for improving delivery of local health services within Cheadle hospital:-

- Ability to access a doctor over more hours (particularly early morning, late evening and weekends).
- Bringing all GPs together under one roof could mean GPs are available for longer hours, as the workload and staff could be shared. In addition, encourage any other appropriate clinical support to house themselves in the same building.
- One stop shop including GP co-operative to achieve service excellence in Cheadle.
- Environment with everything on site, together.
- Community services to be housed within the same building as primary care services to help with social care prescribing.
- A minor injuries/walk-in facility similar to Leek Moorlands is important as the area is opening up to more tourist-based industry.
- Need a doctor led walk in centre as other similar services are too far away.
- An assessment clinic to help signpost patients to appropriate services. This could also focus on prevention rather than cure and assess patients in a local, social and cultural context to provide early intervention, such as stop smoking services, healthy eating, and mental health support.

# Changing/improving the delivery/design of local health services (2)

The options that the public suggested for improving delivery of local health services within Cheadle hospital:-

- Provide as many relevant appointments in the community rather than at UHNM. This could be through outpatient clinics or mobile services.
- Re-instate Staffordshire Ambulance Service. Dedicate ambulance crews for local areas.
- Reintroduce CPOs who can prescribe to patients, avoiding attendance and admissions at hospital.
- Redesign Ambulatory Emergency Care with patients. It is not good for people who have been in A&E overnight.
- Invest in technology, but also invest in people - training, signposting, communications and voluntary sector.
- Local businesses and tourist facilities need to be aware of local health services that people can be signposted/directed to. This will help maximise the use of local services rather than adding to the pressure at UHNM.
- Need to know when and how often the clinics take place.
- Need better communications about the options and choices available for care.
- Cheadle hospital website needs refreshing - services have been withdrawn and frequency has become rarer.
- Provide support for carers. More advertising on carers hub - telephone number etc.
- Day care centre for mental and physical health patients to give carers respite.
- Avoid revolving doors.

# Changing/improving the delivery/design of local health services (3)

The options that the public suggested for improving delivery of local health services within Cheadle hospital:-

- Redesign the service for the future considering the ageing and growing population.
- Patients having control of their own health records.
- Need X-ray facilities. Could have a mobile x-ray unit.
- Speech therapy could be a roaming service.
- Have designated days for non-critical services.
- A 'half-way house' is needed to support people between hospital and home. The hospital building could be used for this and provide a medical carer and a homely environment.
- Need assessment and rehabilitation beds in Cheadle.
- Look at what space is not being utilised.
- CCG should liaise with planning to do more things like Bradelely Village Hall.



## Health Profile

### Staffordshire Moorlands District Council

**Life Expectancy at birth** is **80.1 years (males)** and **82.8 years (females)**. This equates to 4 years of extra life for males and over 1 year for females when compared with Stoke.

**Smoking at the time of delivery** remains an issue in Staffordshire Moorlands with 14% of mothers recorded as smokers (England – 10.6%, Stoke 19.1%)

Diabetes is also higher than the England average. **7.5% of adults** in Staffordshire Moorlands were recorded as having **diabetes** in 2014/15 (England – 6.4%)

Alcohol related harm admissions are similar to the England average, but admissions **for self-harm are worse**. The rate of admissions for self-harm in 2015/16 was 233.1 admissions per 100,000 compared with 196.5 per 100,000 in England

**Excess Winter deaths** looks at the ratio of extra deaths from all causes that occur in winter months compared with the expected number of deaths. Staffordshire Moorlands benchmarks above the England average for the period August 2012 to July 2015

### Disease Prevalence of Staffs Moorlands Locality

#### Conditions with a higher prevalence than England

- Asthma
- Atrial Fibrillation
- Cancer
- Coronary Heart Disease
- Depression
- Diabetes
- Epilepsy
- Hypertension
- Obesity
- Palliative Care
- Stroke

#### Conditions with a lower prevalence than England

- Chronic Kidney Disease
- COPD
- Dementia
- Learning Difficulties
- Mental Health
- Osteoporosis

# Deprivation

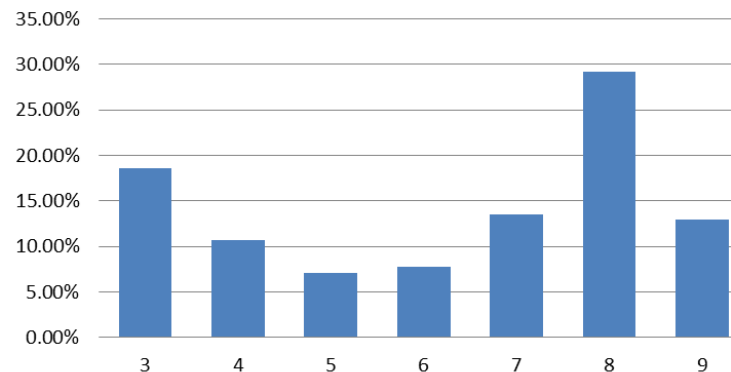
## Staffordshire Moorlands District Council

Compared with benchmark ● Better ● Similar ● Worse ● Lower ● Similar ● Higher ○ Not Compared

Indicator	Period	Staffs Moor		Region England		England		Range	Best/Highest
		Recent Trend	Count	Value	Value	Value	Worst/Lowest		
Deprivation score (IMD 2015)	2015	-	-	15.2	-	21.8	42.0		5.0
Children in low income families (under 16s)	2014	→	1,905	12.8%	23.5%	20.1%	39.2%		6.6%
Statutory homelessness	2015/16	-	-	*	1.0*	0.9	-	Insufficient number of values for a spine chart	-
GCSEs achieved	2015/16	-	560	58.8%	54.8%	57.8%	44.8%		78.7%
Violent crime (violence offences)	2015/16	↑	1,437	14.7	17.0	17.2	36.7		4.5
Long term unemployment	2016	↓	85	1.5*	6.3*	3.7*	13.8		0.4
Smoking status at time of delivery	2015/16	→	110	14.2%	13.1%*	10.6%*	26.0%		1.8%
Breastfeeding initiation	2014/15	-	494	62.4%	66.8%	74.3%	47.2%		92.9%
Obese children (Year 6)	2015/16	→	171	19.4%	22.1%	19.8%	28.5%		9.4%
Hospital stays for alcohol-specific conditions (under 18s)	2013/14 - 15/16	-	19	34.8	32.6	37.4	121.3		10.5
Under 18 conceptions	2015	↓	35	21.5	23.7	20.8	43.8		5.4
Smoking prevalence in adults	2016	-	-	9.0%	15.4%	15.5%	25.7%		4.9%
Percentage of physically active adults	2015	-	-	60.7%	55.1%	57.0%	44.8%		69.8%
Excess weight in adults	2013 - 15	-	-	64.9%	66.8%	64.8%	76.2%		46.5%
Cancer diagnosed at early stage	2015	-	210	46.4%	52.1%	52.4%	39.0%		63.1%
Hospital stays for self-harm	2015/16	-	204	233.1	208.9	196.5	635.3		55.7
Hospital stays for alcohol-related harm	2015/16	-	665	654	728	647	1,163		374
Recorded diabetes	2014/15	↑	5,716	7.5%	7.3%	6.4%	9.2%		3.3%
Incidence of TB	2013 - 15	-	10	3.4	14.4	12.0	85.6		0.0
New sexually transmitted infections (STI)	2016	→	189	316	686	795	3,288		223
Hip fractures in people aged 65 and over	2015/16	-	139	644	619	589	820		312
Life expectancy at birth (Male)	2013 - 15	-	-	80.1	78.7	79.5	74.3		83.4
Life expectancy at birth (Female)	2013 - 15	-	-	82.8	82.7	83.1	79.4		86.7
Infant mortality	2013 - 15	-	13	5.3	5.7	3.9	8.2		0.8
Killed and seriously injured on roads	2013 - 15	-	81	27.6	33.9	38.5	103.7		10.4
Suicide rate	2013 - 15	-	26	9.8	10.3	10.1	17.4		5.6
Smoking related deaths	2013 - 15	-	-	-	280.9	283.5	-	Insufficient number of values for a spine chart	-
Under 75 mortality rate: cardiovascular	2013 - 15	-	188	59.7	78.9	74.6	137.6		43.1
Under 75 mortality rate: cancer	2013 - 15	-	384	122.6	143.6	138.8	194.8		98.6
Excess winter deaths	Aug 2012 - Jul 2015	-	288	29.6	20.4	19.6	36.0		6.9

## Cheadle Hospital Service Use

### Service Use by Deprivation Decile



### Deprivation Decile Measures

- 1 = Most Deprived Areas
- 10 = Least Deprived Areas

### Staffordshire Moorlands worst in

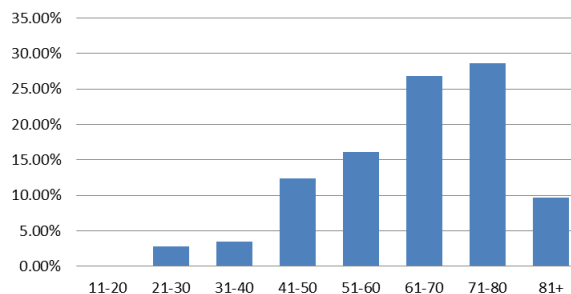
- Smoking at time of delivery
- Breastfeeding
- Recorded Diabetes
- Excess Winter Deaths

# Demographics

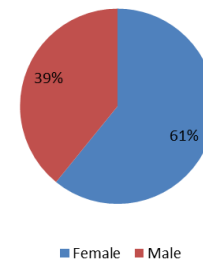
## Staffordshire Moorlands Locality Registered Population

Practice Code	Practice Name	List Size
M83011	Werrington Village Surgery	7824
M83096	The Tardis Surgery	6264
M83103	Allen Street Surgery	4111
M83108	Well Street Practice	7454
M83121	Tean Surgery	6056
M83122	Waterhouses Medical Practic	3199
M83640	Alton Primary Care Centre	2558
<b>Total</b>		<b>37466</b>

Age of Service Users



Gender of Service Users



## Population Projections CCG Level

Percentage Change (2017-2022)



- Staffordshire Moorlands Rural Locality has a registered GP population of circa 37,466 patients.
- The Age of patients accessing services at Cheadle Hospital is generally over the age of 50, but over half of all appointments being for patients 60+.
- More Females than Males access services at Cheadle Hospital.
- The population of North Staffordshire will increase by almost 9,000 in people aged 70+ by 2022.

## Service Utilisation at Cheadle Hospital

### Utilisation Activity of Services (Data Received)

Delivery	Service	2016				2017				Grand Total
		Qtr1	Qtr2	Qtr3	Qtr4	Qtr1	Qtr2	Qtr3	Qtr4	
Outpatient	Cardiology				10	9				19
	Neurology	68	97	96	144	140	130	143	136	954
	Dietetics				5	13	34	25	14	91
	Drug Monitoring		207	188	197	150	195	122	62	1121
	Memory Clinic	52	45	53	50	116	124			440
<b>Grand Total</b>		<b>68</b>	<b>304</b>	<b>284</b>	<b>356</b>	<b>312</b>	<b>359</b>	<b>290</b>	<b>212</b>	<b>2185</b>

### Average Utilisation of Services where no Data Received

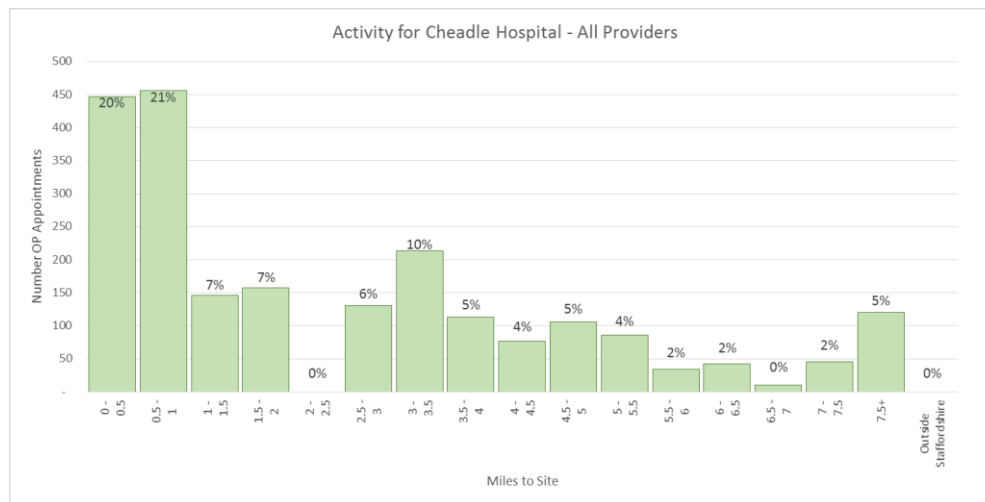
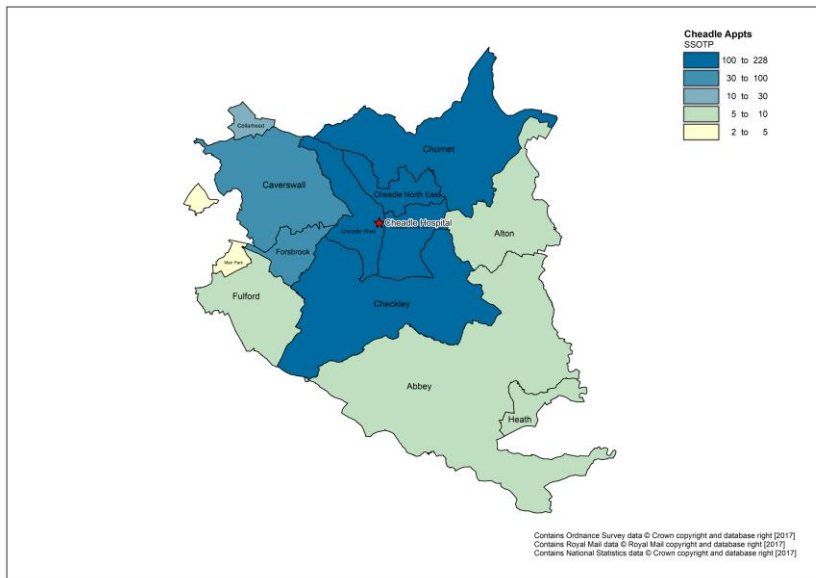
Service	Avg Weekly Appointments
Diabetes Clinic	16
District Nurses	70
Falls	34
Physiotherapy	141
Pulmonary Rehab	6
Speech and Language Therapy	8
<b>Total</b>	<b>275</b>

### Services where no Data Received

GPSI Substance Misuse
Audiology
Epilepsy
Heart Failure Clinic
INR
Multiple Sclerosis
Parkinsons Clinic
Supportive Therapies

# Travel Analysis

## Service User Travel Distance



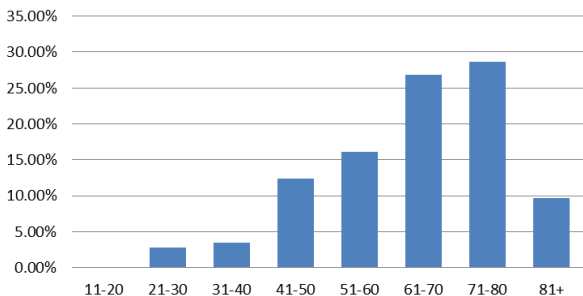
## Patient Transport Services Patient Distance Travel

Service	0-5	6-10	11-15	Total
Diabetes	100%	0%	0%	100%
Memory Clinic	100%	0%	0%	100%
Neurology	0%	60%	40%	100%
Outpatients	33%	33%	33%	100%
Parkinsons	100%	0%	0%	100%
Physiotherapy	0%	100%	0%	100%
<b>Grand Total</b>	<b>19%</b>	<b>65%</b>	<b>16%</b>	<b>100%</b>

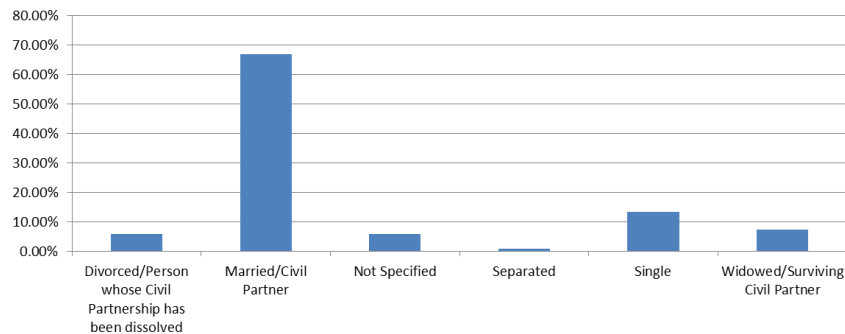
- 55% of appointments at Cheadle Hospital are accessed by patients within 2 miles.
- 84% of patients using the Non Emergency Patient Transport Service to Cheadle Hospital are within 10 miles.

# Equality

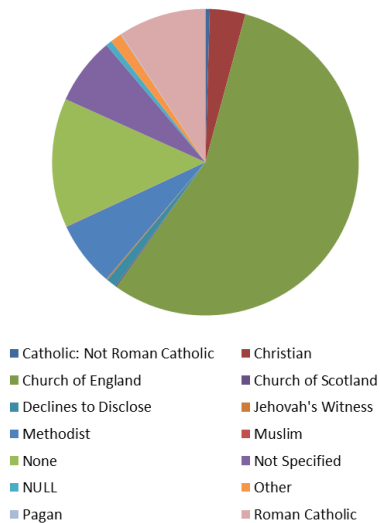
### Age of Service Users



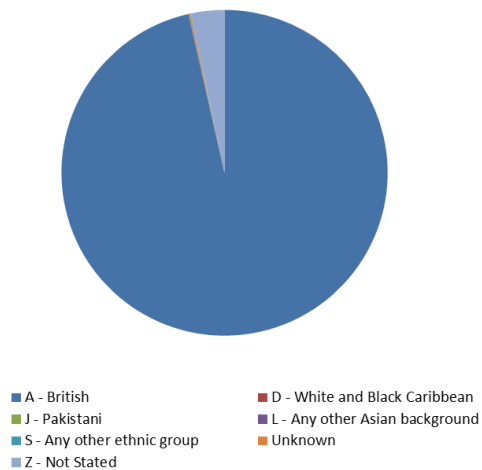
### Marriage/Civil Partnership of Service Users



### Religion of Service Users



### Ethnicity of Service Users



### Gender of Service Users

