

Designing Your Future Local Health Services

23 November 2017

What is this about?

- To gather your views on how we could deliver the best services to all patients to meet their changing health needs
- To recap on what's happened so far
- To understand the steps we must go through next
- To take the conversation to the next stage
- To discuss the options for how local health services could be delivered
- To design high quality, accessible and affordable local health services

Together We're Better

The Sustainability & Transformation Partnership is delivering the plan, developed by clinical and social care leaders

The Plan sets out how services can be changed to improve care and the patient experience, while addressing the problem of demand for services continually outpacing the resources available

STP Priorities

- Simplified urgent and emergency care system - redesigning emergency and urgent care services to reduce avoidable A&E attendances and unplanned admissions
- Mental health - improving outcomes for our citizens experiencing mental health issues as well as ensuring that physical and mental health are treated equally
- Focused prevention - identifying where investment in prevention will have a positive impact on the health of the population and in reducing high cost care
- Enhanced primary and community care – bringing together services provided by doctors pharmacists, optometrists and dentists with professionals such as district nurses, therapists and community psychiatric nurses
- Enable the frail elderly and those with long-term conditions to live independent lives and avoiding unnecessary, costly and upsetting emergency episodes
- Effective and efficient planned care – ensuring hospital services meet patient needs and are as efficient as possible
- Accelerating the delivery of productivity and efficiency plans to reduce costs

The Future of General Practice

Work is underway to implement the GP 5 Year Forward View including:

- Extended Access to GPs
- Social Prescribing
- Care Navigation
- Self Care

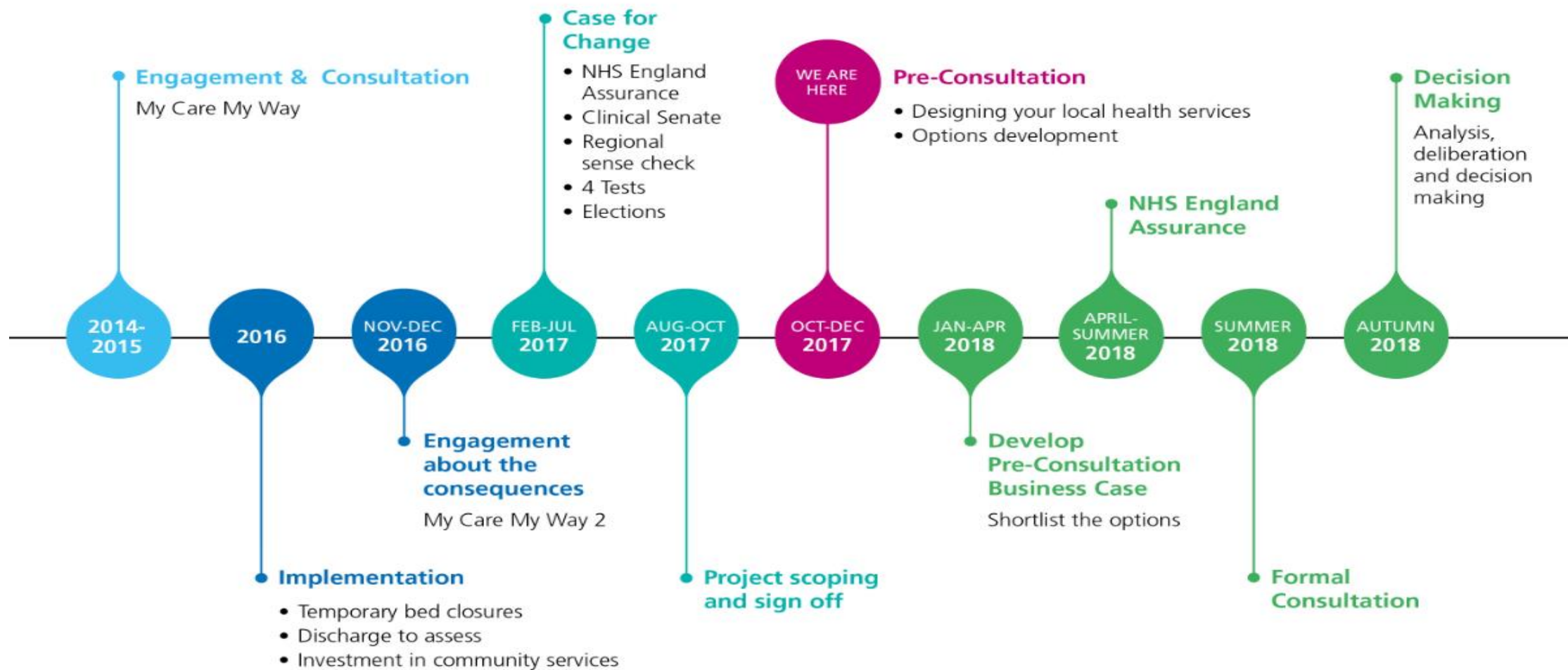
North Staffordshire and Stoke-on-Trent MCP Alliance

The Alliance Board is drawn from local GP Practices, GP Federation, local NHS Providers and Stoke-on-Trent City Council - as well as representatives of patients, service users and the voluntary sector to:

- Make sure doctors, nurses, social workers and other professionals work together to improve the quality of care and health outcomes
- Improve the life chances for local people by reducing health inequalities; and
- Increase the quality of life for the population by promoting health and wellbeing

The vision is to mature into a multi-specialty provider able to deliver services within the geographical area of the two NHS Clinical Commissioning Groups in North Staffordshire and Stoke-on-Trent

The Journey



Where are we now?

- Some rehabilitation beds across the area are temporarily closed to new admissions
- All other services at the community hospitals remain open
- West Midlands NHS England Clinical Senate support the model of care
- **No decisions** have been made by the CCG about the future services at Bradwell Hospital and in the area

- We are listening.....

Views and opinions.....

- Previous engagement & consultation with clinicians and the public:-
 - Patient safety is the number 1 priority
 - Patients benefit from being - and prefer to be - at home
 - Support for the proposed model of care
 - Reassurance that the new model will be carefully implemented
 - Community based services must be in place
 - Concern about the future of community hospitals

Did you know?.....





Home First
£12.3m

5203+
hours/week

- Intermediate care
- Enablement
- Palliative care
- Night support

NHS funded care
for up to **6 weeks**



92%
of NHS contact is
with your GP



Therapy and medical cover
£200,000

132
community beds remain



£11.6m

The Benefits of Discharge to Assess

- More people will be able to live where they want to for longer
- Length of stay in hospital reduces
- Assessments take place in a more appropriate situation and place
- Evidence suggests this reduces the harm caused by long stays in hospital
- Enables patients to access urgent care at the time they need it
- D2A is a cornerstone of modern care for older, vulnerable people. The last thing a person with frailty needs is to be kept waiting unnecessarily in hospital for an assessment to get access to care and support. *Professor Martin J Vernon (2016)*
- By October 2017 every local health system must have adopted good practice to enable appropriate patient flow, including 'discharge to assess'. *NHS 5 Year Forward View (2017)*



Non-bed based services at Bradwell Hospital

Audiology Tinnitus	Immunology	Phlebotomy
Cardiogram Scanning	Lymphoedema	Physiotherapy
Dermatology	Memory Clinics	Rheumatology
Diabetic Eye Screening	Midwives	Supportive Therapies
District Nurses	Musculoskeletal Interface Service (MIS)	Wound Care
Ear, Nose and Throat (ENT)	Obstetric Ultrasound	

Bradwell Hospital and Area Health Services

The map displays the Bradwell Hospital and surrounding area, with various health services marked by colored icons. The hospital is located in the center of the map. Surrounding areas include Crackley, Springwood, Chesterton, Beasley, Church Fields, Dimsdale, Porthill, Wolstanton, Cross Heath, Knutton, The Brampton, Basford, May Bank, and Newcastle. The map also shows major roads like the A66 and A63, and the River Trent. A red line indicates the location of the closed Knutton Clinic.

Dr. Malgwa Branch

Heathcote St. Surgery

Loomer Road Surgery

Bradwell Hospital

Loomer Road MC

Silverdale Health Centre

Knutton Clinic Closed

Porthill Clinic

Wolstanton MC

The Village Surgery

Milehouse PC Centre

Ryecroft MC

Sandy Lane Clinic

Miller Street Surgery

The Future of Local Health Services

- Can we do better?
- What could be possible...?
- Considerations
 - The need to spend the Staffordshire £ wisely
 - Accessibility e.g. public transport
 - The differences between urban and rural locations
 - Diversity and local needs

How will we decide

Principles

More effective and innovative commissioning

Better health outcomes

'Home First' through care at home and community based services

Prevent illness

Joined up care

Empowering people to care for themselves and remain independent for as long as possible

Following Good Practice

Delivering quality care

Clinically sustainable

Meets need

Accessible

Fits with national and local strategy

Affordable

Long Listing

Discuss the options with you and what's important to you

What's Most Important to you?

- Delivering quality care
- Clinically sustainable
- Meets need
- Accessible
- Fits with national and local strategy
- Affordable

Let's Discuss....

1. What are the most important criteria to you?
2. From the list of services – which should remain at Bradwell Hospital?
3. Are there other ways to provide them?
4. Are there any essential services missing in the area?
5. Which services might people be willing to travel further for?

Feedback

Next Steps

- We will apply weightings to the criteria according to what you say is important
- Work with stakeholders to develop the options
- Follow NHS England Process
- Keep you informed