

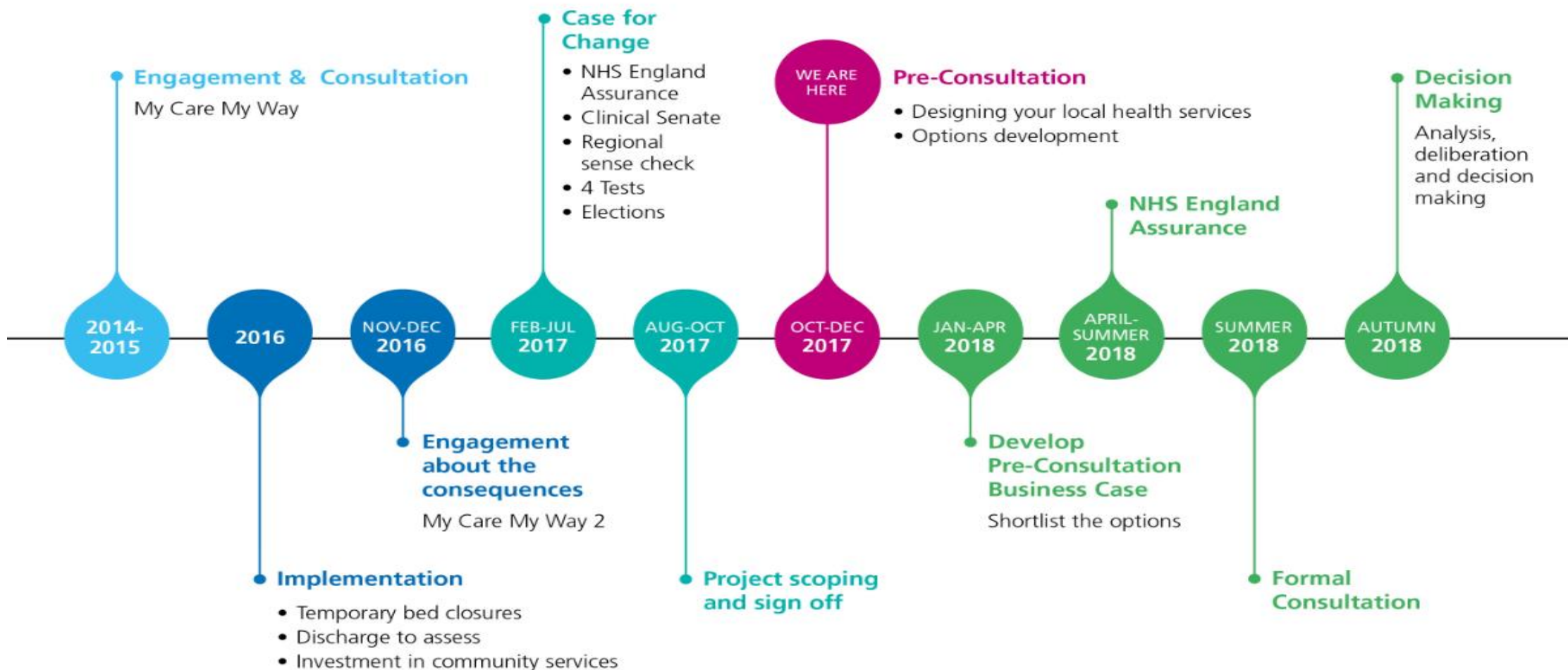
Designing Your Future Local Health Services

9 November 2017

What is this about?

- To gather your views on how we could deliver the best services to all patients to meet their changing health needs
- To recap on what's happened so far
- To understand the steps we must go through next
- To take the conversation to the next stage
- To discuss the options for how local health services could be delivered
- To design high quality, accessible and affordable local health services

The Journey



Where are we now?

- Some rehabilitation beds across the area are temporarily closed to new admissions
- All other services at the community hospitals remain open
- West Midlands NHS England Clinical Senate support the model of care
- **No decisions** have been made by the CCG about the future services at Haywood Hospital and in the area

- We are listening.....

Views and opinions.....

- Previous engagement & consultation with clinicians and the public:-
 - Patient safety is the number 1 priority
 - Patients benefit from being - and prefer to be - at home
 - Support for the proposed model of care
 - Reassurance that the new model will be carefully implemented
 - Community based services must be in place
 - Concern about the future of community hospitals

Did you know?.....





Home First
£12.3m

5203+
hours/week

- Intermediate care
- Enablement
- Palliative care
- Night support

NHS funded care
for up to **6 weeks**



92%
of NHS contact is
with your GP



Therapy and medical cover
£200,000

132
community beds remain



£11.6m

The Benefits of Discharge to Assess

- More people will be able to live where they want to for longer
- Length of stay in hospital reduces
- Assessments take place in a more appropriate situation and place
- Evidence suggests this reduces the harm caused by long stays in hospital
- Enables patients to access urgent care at the time they need it
- D2A is a cornerstone of modern care for older, vulnerable people. The last thing a person with frailty needs is to be kept waiting unnecessarily in hospital for an assessment to get access to care and support. *Professor Martin J Vernon (2016)*
- By October 2017 every local health system must have adopted good practice to enable appropriate patient flow, including 'discharge to assess'. *NHS 5 Year Forward View (2017)*



Non-bed based services at Haywood Hospital

Amputee Rehabilitation / Limb fitting service	Impact Pain Management	Physiotherapy
Bone Densitometry (DEXA)	Musculoskeletal Interface Service (MIS)	Podiatry
Day Case Unit	Obstetric Ultrasound	Rehabilitation Medicine
Diagnostics	Occupational Therapy	Rheumatology
DVT Clinic	Orthopaedic	Walk in Centre
Fracture Liaison Service	Pharmacy	
Heart Failure	Phlebotomy	

Haywood Hospital and Area Health Services



The Future of Local Health Services

- Can we do better?
- What could be possible...?
- Considerations
 - The need to spend the Staffordshire £ wisely
 - Accessibility e.g. public transport
 - The differences between urban and rural locations
 - Diversity and local needs

How will we decide

Principles

More effective and innovative commissioning

Better health outcomes

'Home First' through care at home and community based services

Prevent illness

Joined up care

Empowering people to care for themselves and remain independent for as long as possible

Following Good Practice

Delivering quality care

Clinically sustainable

Meets need

Accessible

Fits with national and local strategy

Affordable

Long Listing

Discuss the options with you and what's important to you

What's Most Important to you?

- Delivering quality care
- Clinically sustainable
- Meets need
- Accessible
- Fits with national and local strategy
- Affordable

Let's Discuss....

1. What are the most important criteria to you?
2. From the list of services – which should remain at Haywood Hospital?
3. Are there other ways to provide them?
4. Are there any essential services missing in the area?
6. Which services might people be willing to travel further for?

Feedback

Next Steps

- We will apply weightings to the criteria according to what you say is important
- Work with stakeholders to develop the options
- Follow NHS England Process
- Keep you informed